



15 Crow Lake Pl

Bettendorf, IA 52722 • Single Family • For Sale • **Closed**

\$454,025

4 Beds | 2 Baths | 1,823 Sqft | 3 Cars



Description

Gorgeous new spec home in WyndGate built by Definitive Builders Inc! This ranch home boasts a wonderful main level master suite, hardwood floors, volume ceilings featuring beams in the great room and an open floor plan. The fabulous finished basement has 2 bedrooms, bath and a spacious rec room with gas fireplace. Flexibility for your lifestyle as bedroom 2 could also be an office on main level. Walk-out from the dining area to lovely composite deck. The yard is beautifully landscaped with a custom water feature and there is a 3 car garage. Home is pre-wired for surround sound. Enjoy care free living in this community as the association takes care of lawn care, snow removal and the water for irrigation system.

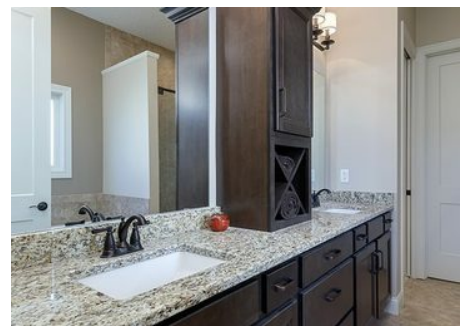
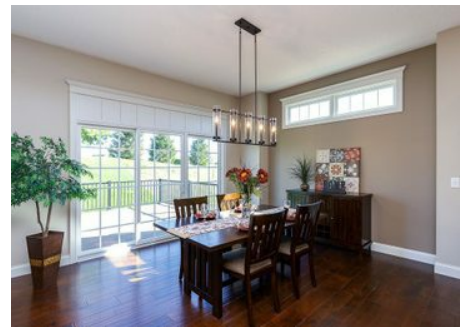
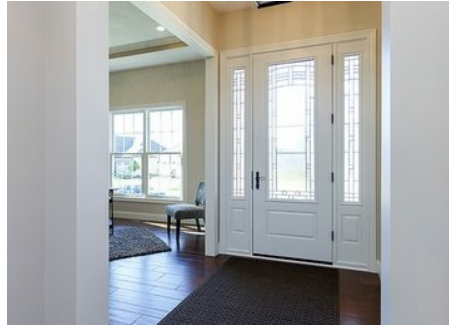
Property Highlights

- School District: *Pleasant Valley*
- Property Type: *Single Family, Residential*
- MLS #: *4190882*
- New Construction
- Style: *Ranch*



Location | 15 Crow Lake Pl, Bettendorf, IA 52722







Ruhl&Ruhl Realtors | 1701 - 52nd Avenue, Moline, IL 61265 | 309.236.3053 | jonloquist@ruhlhomes.com



For full property details visit:
<https://jonloquist.ruhlhomes.com/4190882/>